

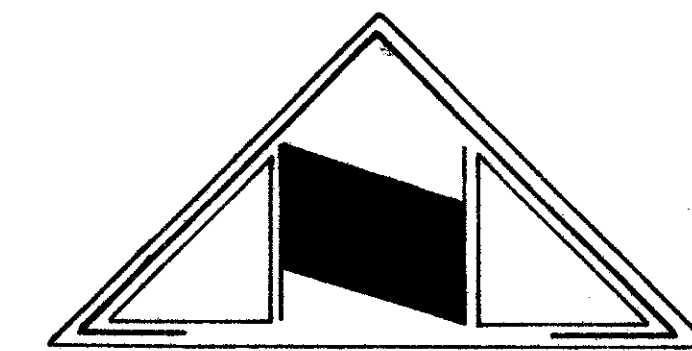
INDIAN WOODS P.U.D.

THE S.E. 1/4 OF THE S.E. 1/4 OF THE N.E. 1/4 OF SECTION 25
TWP. 43 S., RGE. 42 E., PALM BEACH COUNTY, FLORIDA
SHEET 2 OF 2

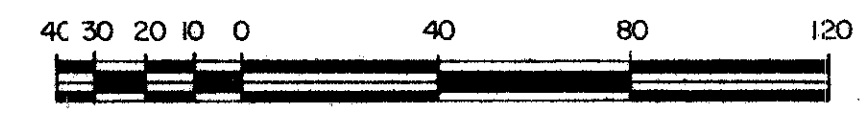
ACREAGE

2
49

STATE OF FLORIDA
COUNTY OF PALM BEACH
This plat was filed for
record at _____ M. this _____ day
of _____ 1984, and duly
recorded in Plat Book No. _____
on Page _____
JOHN B. DUNKLE
Clerk Circuit Court
By: _____ D.C.

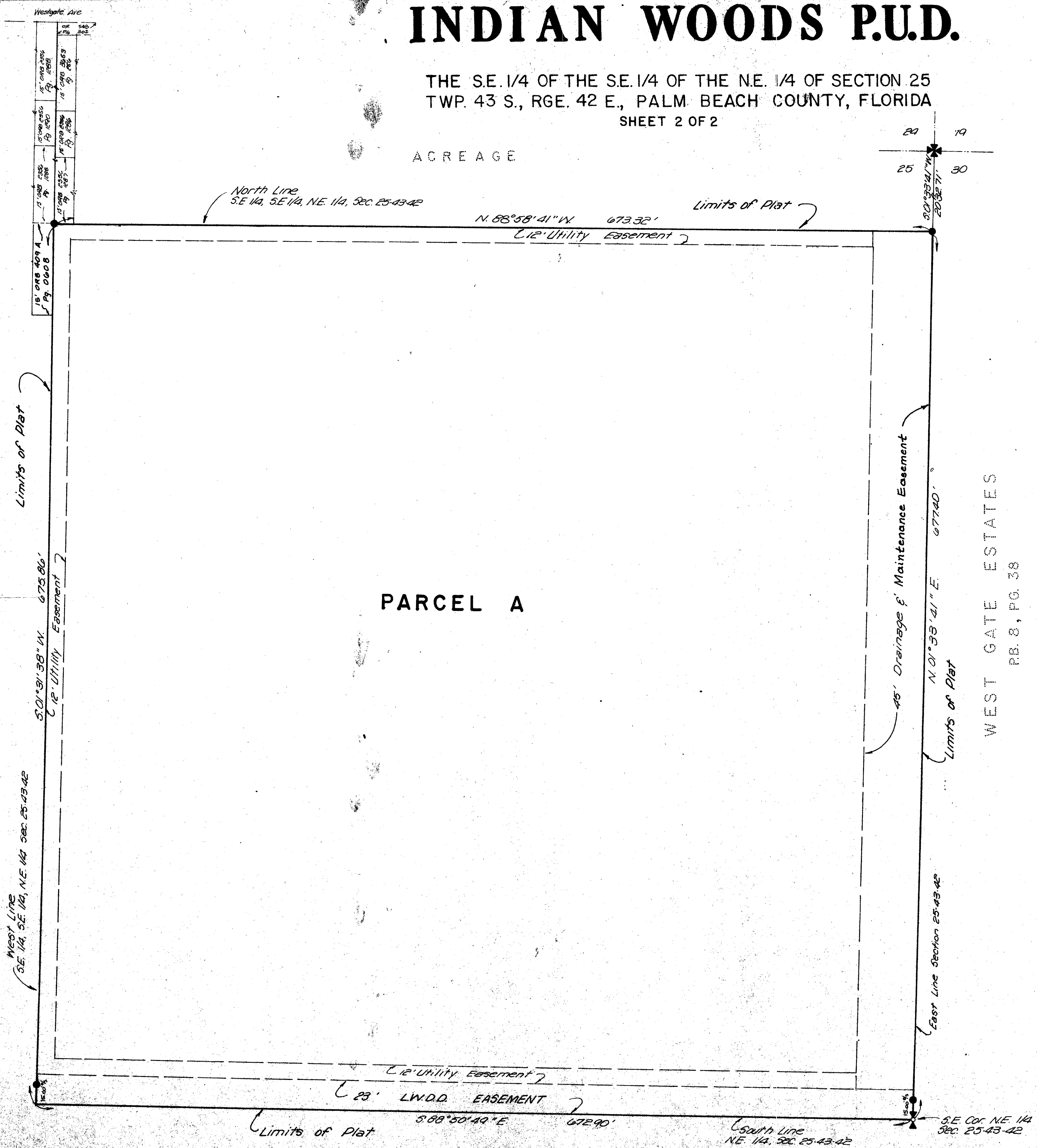


PREPARED BY:
MICHAEL G. PURMORT & ASSOCIATES, INC.
LAND SURVEYORS · PLANNERS
1300 E. HILLSBORO BLVD., EXECUTIVE PLAZA, SUITE 202,
DEERFIELD BEACH, FLORIDA, 33441



GRAPHIC SCALE
ONE INCH EQUALS FORTY FEET

SHEET 2 of 2



PARCEL A

WEST GATE ESTATES
PB. 8, PG. 38

PLAT NO 5
GOLFVIEW HEIGHTS
PB. 24, PG. 8

0384-000

INDIAN WOOD 49/1

49/1
DRAWING NUMBER

DRAWING NUMBER

DRAWING NUMBER

DRAWING NUMBER

PLAN HOLD CORPORATION · IRVINE, CALIFORNIA
REGISTERED BY NUMBER 0348